

COMPANY PROFILE

GLA ENGINEERS SDN.BHD.
COMPANY REGISTRATION NO - 1203542D

About Us

About Us

GLA ENGINEERS SDN. BHD. (GLA)

GLA Engineers Sdn. Bhd. (GLA) is a private limited company incorporated in Kuala Lumpur, Malaysia, under the Companies Act, 1965, on 29th September 2016.

Despite being a small company, GLA is committed to achieving significant outcomes, operating as a multi-disciplinary engineering firm specializing in heavy equipment, particularly port material handling and lifting equipment.

GLA offers a range of engineering services, including Consultation, Third-Party Inspection Agency, Resident Engineer Services, NDT services, Design Review Consultant, Equipment in-service Inspection, Project Management Services. Additionally, the company is involved in the trade of crane spare parts and components.

We continuously strive to remain at the forefront of the industry, aiming to deliver exceptional quality and value to our customers and clients.

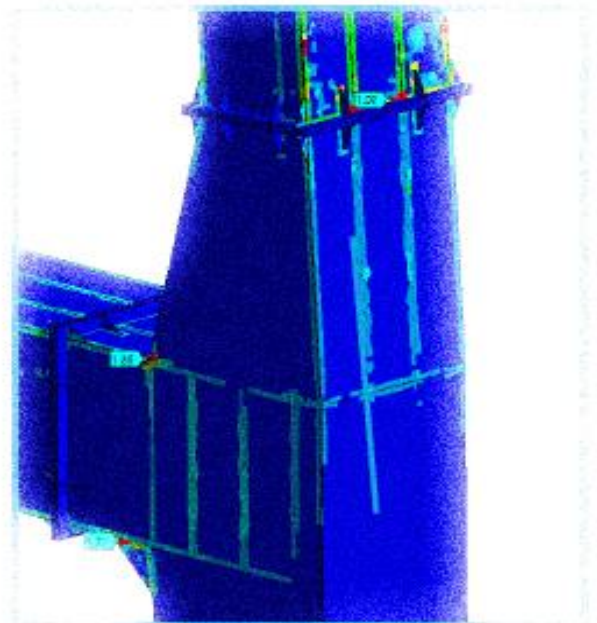
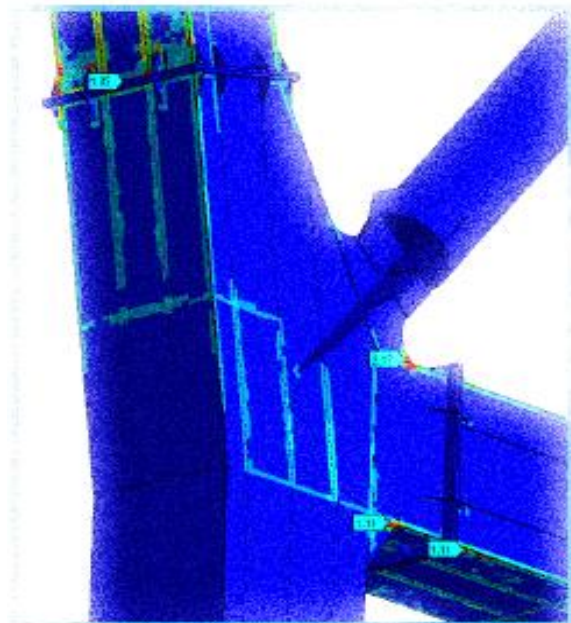
Our goal is to maintain a high standard of excellence and professionalism across all aspects of our business operations, ensuring the most effective, efficient, and economical services.

With a wealth of experience in the port container handling and heavy equipment industries, GLA is well-equipped to handle complex projects. Our team of engineers, specialists, crane inspector and technicians has extensive experience in both local and international markets, including Malaysia, Mexico, USA, Singapore, Saudi Arabia, Indonesia, and beyond.

Our involvement in international projects has enabled us to adapt to diverse client requirements and uphold high standards across borders. Our focus on port material handling and lifting equipment has given us a strong foothold in industries where reliability, safety, and efficiency are paramount. We have consistently delivered results that exceed client expectations, with a reputation for professionalism, technical expertise, and a commitment to customer satisfaction.



Meet the Team



Meet the Team

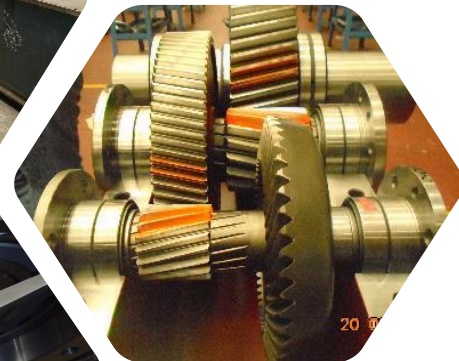
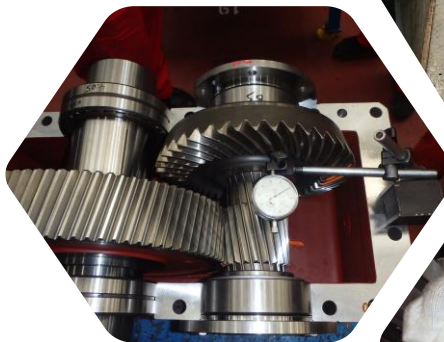
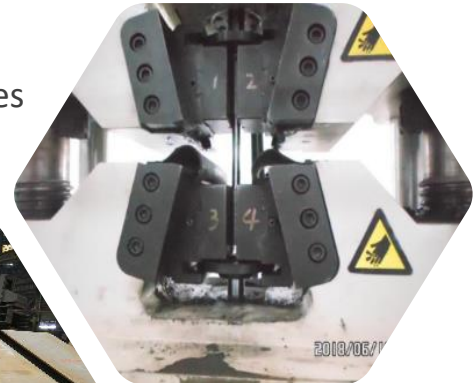
<p>Mohd Ashraf Bin Haji Saidon <i>Principal</i></p> <p>Ashraf is a graduate of the University Kuala Lumpur – Malaysia France Institute (UniKL-MFI) with a major study in Metal Fabrication Technology. He has 19 years' experiences in heavy industry steel fabrication, manufacturing, construction and inspection in port heavy equipment handling and oil-gas sector. He is responsible for QA/QC, project management of field operations, contract management, and safety. Additionally, Ashraf has served numerous international clients, including those in the USA, Canada, Mexico, Singapore, Saudi and various local Malaysian container terminals, contributing to his broad, global experience in the industry.</p> <p>Email: ashraf.saidon@gla-engineers.com.my Tel.: +60 12 259 2114</p>	<p>Ts. Ahmad Muhammad Bin Haji Awal (P.Tech) <i>Principal</i></p> <p>Ahmad Awal is a graduate of the University of Malaya, holding a Bachelor of Engineering (Electrical). With over 15 years of experience in the industry, he specializes in the commissioning of Crane Control Systems, including variable frequency drives and other electrical systems. Ahmad has worked with numerous international clients, including those in the USA, Mexico, Singapore, Saudi Arabia, Indonesia, and various local Malaysian container terminals, gaining extensive global experience. He has significant expertise in electrical commissioning and is highly skilled in equipment refurbishment projects. He is responsible for driving the future growth of GLA's business while maintaining strong relationships with customers.</p> <p>Email: ahmad.awal@gla-engineers.com.my Tel.: +60 17 641 3505</p>	<p>Izamuddin Bin Haji Abdul Muin <i>Principal</i></p> <p>Izam is a graduate of the Industrial Training Institute, Penang, specializing as a Motor Vehicle Mechanic. He is a certified mechanic and heavy lift specialist with 32 years of experience, including over 20 years as a Heavy Lift and Installation Superintendent. In his role as Project Superintendent and Mechanical Specialist, he frequently travels to project sites. Izam's extensive experience includes working with international clients and a strong proficiency in crane mechanical and hydraulic systems, as well as electro-mechanical components. He is highly skilled in crane maintenance, troubleshooting, upgrading work, and managing complex modifications and improvements.</p> <p>Email: izam.abdmuin@gla-engineers.com.my Tel.: +60 16 922 9907</p>
<p>Danny Zhu Wen Jun <i>Senior Executive (Shanghai PR China)</i></p> <p>Danny has 16 years of extensive experience in port container handling, heavy equipment construction, fabrication, installation, erection, and testing. He previously worked as a QA Engineer at Zhenhua Port Heavy Industry (ZPMC) in Shanghai, China, where he managed several international crane projects throughout his career. Danny has also spent many years working abroad as a site manager in the USA, Canada, Korea, and other locations. He is highly skilled in managing complex projects for international clients, particularly in the construction of new cranes, where he serves as the primary contact on-site. He is certified Engineer recognized by CCC, China.</p> <p>Email: danny.zhu@gla-engineers.com.my Tel.: +86 152 711 06902</p>	<p>Muhammad Faridz Bin Haji Zailani <i>Senior Executive (Shah Alam)</i></p> <p>Faridz is a seasoned professional with extensive experience in the field of container crane procurement, business strategy planning, and project management. He has a proven track record of successfully handling both local and international clients, specializing in container crane operations, sourcing, tendering, contract evaluation, and spare parts management. His expertise lies in driving business growth and ensuring the efficient procurement of container cranes for clients in various sectors.</p> <p>Email: faridz.zailani@gla-engineers.com.my Tel.: +60 19 304 0482</p>	<p>Ahmad Ahza Bin Haji Saidon <i>Senior Executive (Shah Alam)</i></p> <p>Ahmad Ahza is a certified Welding & NDT Inspector, specializing in Ultrasonic Testing and Magnetic Particle Testing at Level II. With extensive experience as a structural inspector, he has expertise in the inspection of painting, welding, and non-destructive testing. Since 2015, Ahza has worked on numerous port handling equipment projects, covering both new construction and in-service works. He has contributed to various international and local Malaysian projects, particularly within the port container industry. Ahza has significant expertise in conducting mid-life and in-service inspections, especially for Quay Cranes and Rubber-Tired Gantry Cranes. As a technical expert at GLA, he possesses a strong foundation in codes and standards, ensuring compliance with industry best practices.</p> <p>Email: ahza.saidon@gla-engineers.com.my Tel.: +60 18 299 1994</p>



Services & Specialties

Our Service & Specialties

The services GLA provides include Project Management Team services, Technical Consultancy, Owner Project Representative, Quality Assurance - Third Party Inspection, NDT services, Machineries and Mechanical Installation, Heavy Steel Structural Fabrication & Erection, Port Terminal Crane Erection & Services, Electrical Instrument and commissioning.

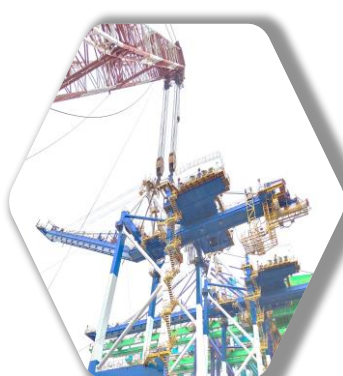


MULTIDISCIPLINE OF ENGINEERING BY GLA

- PMT – Project Management Team Services
- Mechanical Installation & Services
- Complex Equipment Refurbishment
- Crane Retrofitting Works
- Structure Assessment and Non-Destructive Testing
- Quality Assurance & Inspection Services, Third-Party Inspection (TPI)
- Electrical, Instrument and Commissioning Services.
- Equipment Condition Inspection
- Crane Mid-Life Inspection
- Crane In-Service Inspection
- Equipment Health Check
- Equipment Pre-Delivery Inspection
- Evaluation of acquisition of Port Crane / Heavy Equipment
- Technical Assistance
- Resident Engineer Services (RE), Engineering Consultancy.

OUR SERVICES OFFERED WITH AFFILIATE PARTNERS

- Design appraisal and review. FEA/FEM
- Consultancy - review specification and design
- Equipment Vibration Inspection and Analysis
- Part supply for mechanical, electrical and instrumentation
- Fire and Rescue Equipment & Fire Fighting System
- Steel & part machining
- Steel Fabrication
- Heavy Lifting



Project Management Team Services

GLA can provide you with highly experienced program and project managers; experts to help guide, lead, and support high-visibility initiatives.

You can begin a project with us, from initiation to completion in various engineering platform and product or if your project is missing milestones or lacks momentum, contact us and we will deploy project management consultants to get your project back on track.

We blend professional project management with change management best practices to ensure projects are completed on time and on budget and address the human and cultural factors critical to adoption and sustainability.



Quality Assurance / Inspection Services / Resident Engineer / Engineering Consultancy / Project Management Team.

Our QAR (Quality Assurance Representative) service works as the client's eyes and ears in the field, we monitor and control the system installation and commissioning through the start-up and construction phases of the project.

Our Scope of Supply

- Contractor Pre-qualification
- Welder Testing and Inspections
- Installation Procedures
- Weld procedures
- Documentation Control
- Third Party Inspection/Witnessing
- Quality Control and Quality Assurance
- Vendor Source inspections
- Material Inspections
- Site M&E Coordination
- System Commissioning and Testing
- Electrical and Control System Inspections
- Drive upgrading/ system verification.



Non-Destructive Testing

Non-destructive Testing (NDT) plays an important role in assuring that structural and mechanical components perform their function in a safe, reliable, and cost-effective manner.

NDT technicians perform the necessary tests to locate the indicators and discontinuities that may cause failures or shutdowns in such systems.

NDT can be used prior to the use of a component for the sake of quality control. NDT is also employed while components are in use to detect service-related conditions caused by wear, fatigue, corrosion, stress, or other factors which affect reliability.

GLA-NDT Service provide in range of manufacturing, fabrication and in-service inspections to ensure product integrity and reliability, to control manufacturing processes, lower production costs and to maintain a uniform quality level.

During construction, NDT is used to ensure the quality of materials and joining processes during the fabrication and erection phases, and in-service. NDT inspections are used to ensure that the products in use continue to have the integrity necessary to ensure their usefulness and the safety of the public.



Mechanical Installation & Services

Our Mechanical Team are thoroughly trained and certified with hands on evaluations to inspect and maintain on any mechanical parts and equipment's mainly in Port Crane Terminal/ Operation.

Our Engineers and Technicians are dedicated and knowledgeable for inspections and maintenance.

Our Team can do quarterly, semi-annually and annual inspections plus other mechanical overhauling and installation works. Our Mechanical Team are experienced in general maintenance, exchanges of wire rope, pendant lines, balls and hooks, winches, sheaves, booms, hydraulics, pump, bearing and reducer. Whatever your needs you can depend on our mechanical team to meet them with satisfaction guaranteed.

- Catenary Rope Tensioner / Power pack / Snag equipment service
- Sheave pulley replacement
- Gearbox/reducer overhaul and inspection
- Changing of wire rope
- Spare parts for most makers and models
- Fully hydraulic service
- Service to OEM standard
- Dismantling and Re-assembling any mechanical devices
- Seal, gasket replacement
- Shaft and bearing replacement
- Alignment, levelling and adjustment
- Installation of mechanical parts units.



Electrical, Instrument & Commissioning Services

Our Electrical and Commissioning Engineering Team are qualified and experience to provide:

- Complex field service operations that typically present unusual problems requiring electrical & automation control skills.
- Provide leadership in the assembly and operation. Conduct tests requiring selection and adaptation or modification of equipment and procedures. Record, compile and reduce data for analysis and assist in related assessment and preparation of reports.
- Troubleshoot and repair equipment, applying own knowledge and experience. Recommend changes such as new equipment or modified procedures to improve performance to customer satisfaction.
- Lead the performance of assigned field services and be responsible for planning, analysis and reporting of complex projects .



Machining Services

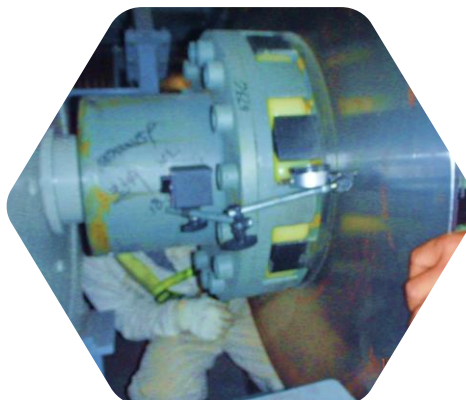
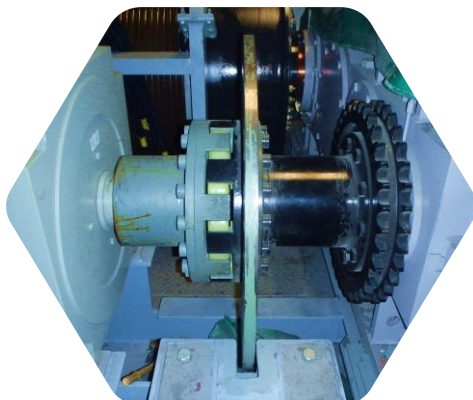
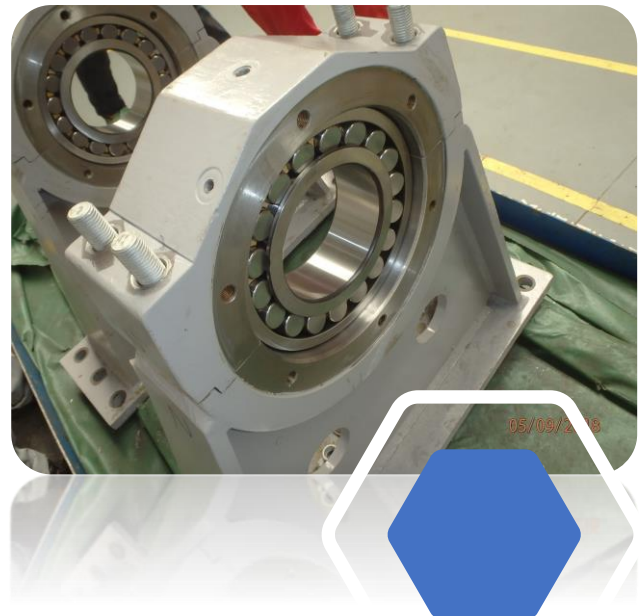
In GLA, we have Professional Machining Team (affiliate partner) which experienced in:

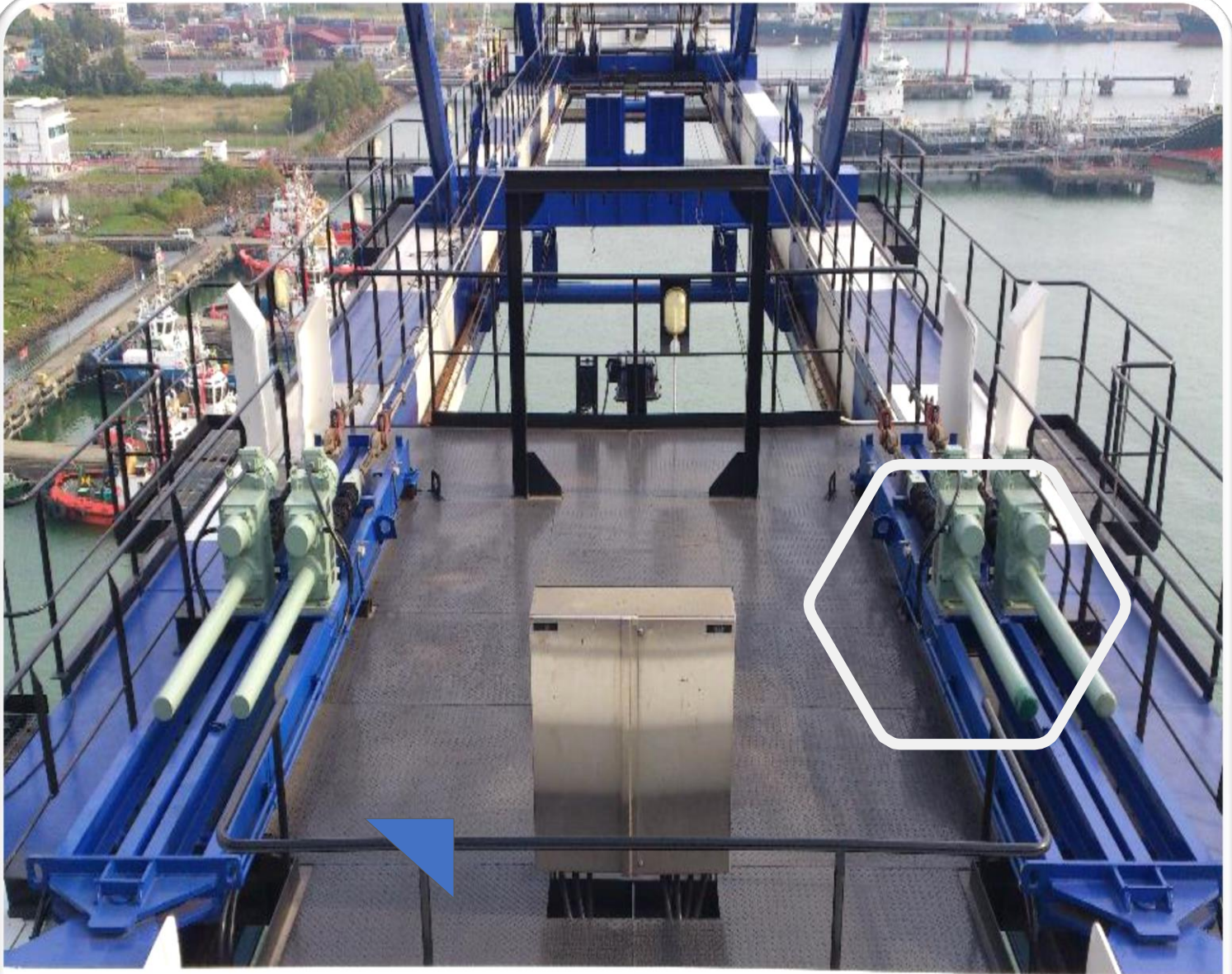
Providing a wide range of precision machining services to meet your unique parts requirements.

GLA machining team is dedicated to smooth, highly efficient precision machining. Whether it's machining complex components, jigs, fixtures, or gages, or repairing or modifying parts, GLA has the expertise to deliver the results you expect.

We are ready to become your trusted partner in success .

- Shaft, wheel, bushing, rod machining works.
- Skimming process
- Boring
- Milling
- Turning
- In-situ boring





Parts
Trading

Parts Trading by GLA

1. KST load sensors and protection systems
2. Caterpillar spare parts
3. EMG Thruster and spare parts
4. Hetronic Radio Remote Control
5. BAUMER Encoder & sensor
6. Hose Restrain & cable Sock
7. Customized LED Display
8. Bearings
9. Rubber Landed / glide
10. Cosmic Part & Spare components
11. Trolley Rail, Short Rail , Rubber Pads, Rail Clip Sets
12. Reducers/ Gearbox
13. Hydraulic Components
14. Brakes
15. Neoprene Rubber
16. Pulsarlube M250 series Auto- Lubricator
17. TLS Screw Jack Assembly
18. Grundfos Vertical Pump
19. Catenary Wheels
20. Analog Output
21. Video Code Module
22. Fire & Rescue Equipment



HSE Policy

GLA Engineers is committed to provide a safe and Healthy workplace for all personnel conducting its business activities, in a manner that protects the environment, prevent of pollution and compliance of applicable legal and other requirement.

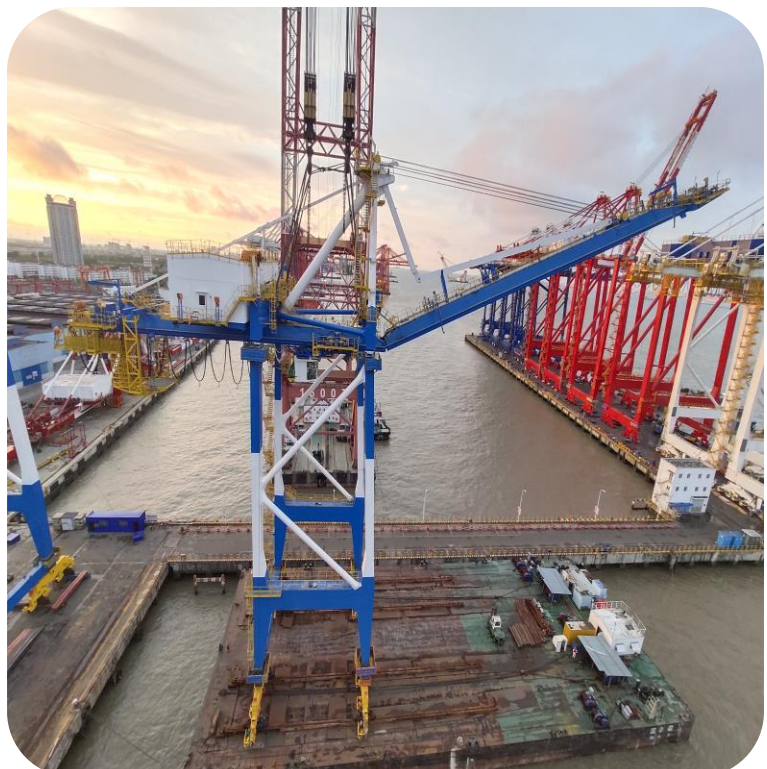
1. Developing and implementing environmental management system and procedure and all workplace
2. Creating HSE awareness amongst all employees through comprehensive program of training and education.
3. Making Top management, Project management Team accountable for HSE management towards elimination of causes that might lead to harm people, environment and damages assets.
4. Recognizing that HSE is everybody direct responsibility
5. Monitoring, evaluating and continually improving HSE performance through audits, assessments, trainings and redefining operational standard.
6. Providing trainings and encouraging behaviours that up hold this policy.



Quality Policy Statement & Objective

GLA will consistently provide a superior products and services worldwide to ensure the product and service that provided meeting customer satisfaction. This will be achieved through customer focused continuous improvement and maintaining an effective quality system which complies with regulatory requirements

- ✓ Enhanced customer satisfaction
- ✓ Prompt delivery of product
- ✓ Supply quality product
- ✓ Superlative service provided
- ✓ Introduction of new and upgraded technology
- ✓ Comply with regulatory & statutory requirement
- ✓ Review quality objectives as and when required



OUR VISSION

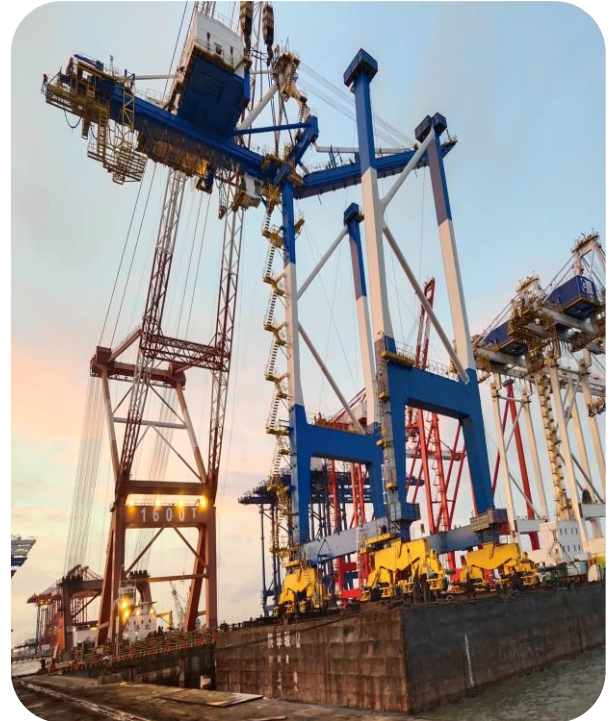
To be the most admired Engineering Company and partner of choice of employees, customers in Malaysia and Global. To produce a world class professional service in line with International Engineering demand

OUR MISSION

Passionately growing our team, delivering innovative solutions which exceed all customer and partner expectation

OUR PHILOSOPHY

Ethically conducting ourselves, continuously empowering the team, realising our "Vision"



Awards & Appreciation



Certificate

Management system as per

ISO 9001 : 2015/ MS ISO 9001 : 2015

The Certification Body TÜV NORD CERT hereby confirms as a result of the audit, assessment and certification decision according to ISO/IEC 17021-1:2015, that the organization

GLA Engineers Sdn Bhd 201601032601 (1203542-D)

No. 22A-G, Jalan Musytari AN U5/AN,
Seksyen U5,
40150 Shah Alam, Selangor,
Malaysia

operates a management system in accordance with the requirements of ISO 9001 : 2015 and will be assessed for conformity within the 3 year term of validity of the certificate.

Scope

Provisions of Engineering Consultation, Project Management, Third Party Inspection, Resident Engineers Services, NDT, M&E Installation, Commissioning, Maintenance and Services.

Trading of Spare Part & Components of Crane

Certificate Registration No. 005 100 25002

Valid from 2025-02-19
Valid until 2028-02-18
Initial certification 2025-02-19

2025-02-19

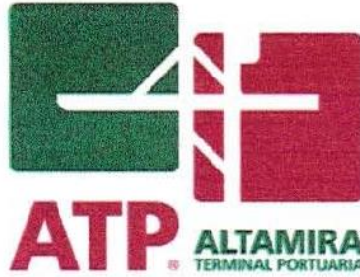
Issuance Date

Certification Body at TÜV NORD (MALAYSIA) SDN BHD

TUV NORD (MALAYSIA) SDN BHD
No. 9F-1A, 9th Floor, Tower 2 @ PFOC
Jalan Puteri 1/2,
Bandar Puteri Puchong
47100 Puchong, Selangor, Malaysia



TUVNORDGROUP



LETTER OF RECOMMENDATION

December 21, 2018
Changxing Island, Shanghai, P.R. China

ALTAMIRA TERMINAL PORTUARIA:

I am pleased to recommend with this letter widely to the company **GLA ENGINEERS SDN. BHD. (1203542-D)**, due to the fact that it is a company whose mission is the supervision in Changxing Island, Shanghai, P.R. China of structural, mechanical and electrical works in the construction of **SHIP TO SHORE cranes** and its work is done quickly, safely, following the procedures and technical specifications under which the construction of the machinery is requested.

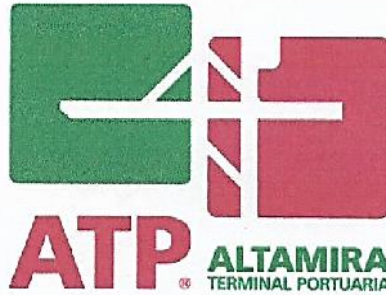
This company has a high sense of responsibility and care in the construction details to ensure a safe and reliable final product.

Personally I have had excellent results with the services of this company, because as always happens, there are inconveniences, which have been resolved satisfactorily by **GLA ENGINEERS SDN. BHD.**

I reiterate my initial recommendation hoping that this will be taken as a reference for the benefit of the company.



Ing. Carlos Alberto Martínez Flores
Project Manager Altamira Terminal Portuaria
Terminal de Usos Múltiples No. 1 s/n, Puerto Industrial de Altamira
Altamira, Tamaulipas, México, CP 89603
Cel: + 52 (044) 833 1191815
+ 86 139 1617 0776
Email: camartinez@atpaltamira.com.mx



LETTER OF RECOMMENDATION

January 17, 2019
Nantong, P.R. China

ALTAMIRA TERMINAL PORTUARIA:

By the present letter I would like to recommend and express my great appreciation to the company **GLA ENGINEERS SDN. BHD. (1203542-D)**, due to the fact that it is a company whose mission is the supervision in Nantong, P.R. China of structural, mechanical and electrical works in the construction of **3 Rubber Tyred Gantry cranes** and its work is done quickly, safely, following the procedures and technical specifications under which the construction of the machinery is requested.

This company has a high sense of responsibility and care in the construction details to ensure a safe and reliable final product.

Personally I have had excellent results with the services of this company, because as always happens, there are inconveniences, which have been resolved satisfactorily by **GLA ENGINEERS SDN. BHD.**

I reiterate my initial recommendation hoping that this will be taken as a reference for the benefit of the company.



Ing. Fernando Mar Castellanos
RTG Project Leader Altamira Terminal Portuaria
Terminal de Usos Múltiples No. 1 s/n, Puerto Industrial de Altamira
Altamira, Tamaulipas, México, CP 89603
Cel: + 52 (044) 833-2598405
+ 86 139 1617 0776
Email: fmar@atpaltamira.com.mx



**ENGINEERING DEPARTMENT
MAHER TERMINALS, LLC**

1205 Corbin Street, Elizabeth, New Jersey, 07201 ♦ (908) 527-8200

December 18, 2020

Ir. Mohd Hafizi Ahmad
Managing Director

GLA Engineers Sdn. Bhd.
No. 22A-G, Jalan Musytari AN U5/AN,
Seksyen U5, 40150 Shah Alam,
Selangor Malaysia.

Dear Mr. Hafizi Ahmad:

I am writing this letter to acknowledge your outstanding achievement and express our appreciation for the efforts of GLA Engineers Sdn. Bhd. in delivering and completing our project of 'Construction of Fantuzzi Crane Raise Project for Maher Terminals LLC, Project No. 6004000866' in Shanghai Zhenhua Heavy Industries Co. Ltd (ZPMC), Shanghai PRC.

This critical project for Maher Terminals was started in October 2019 and continued through the challenging period of the Covid-19 pandemic. Despite all the logistical, personal health and geopolitical challenges GLA Engineers faced throughout this construction in China, the project was successfully completed in October 2020. I appreciate your professionalism throughout the project during the difficult period – it is truly commendable.

GLA Engineers' professionalism, flexibility, technical depth, and commitment to safety is the reason we continue to engage you and your team since our companies first began working together in 2006.

I once again would like to thank you and congratulate you for your hard work and dedication. I look forward to working with you in the future, and wish you continued success with all your upcoming projects.

Yours sincerely,

MAHER TERMINALS LLC

Louis J. Allora

Vice President & General Manager, Engineering Services
Maher Terminals LLC
1205 Corbin St.
Elizabeth, NJ 07201

Tel (908) 527-8200 x4414
Fax (908) 436-4811



KUANTAN PORT CONSORTIUM SDN BHD (374383-H)

Wisma KPC, KM25 Tanjung Gelang, P.O. Box 199, 25720 Kuantan, Pahang Darul Makmur, Malaysia
T +60 9 586 3888 F +60 9 586 3777

GLA ENGINEERS SDN. BHD. (1203542-D)

No.22A-G, Jalan Musytari AN U5/AN,
Seksyen U5, 40150 Shah Alam,
Selangor Darul Ehsan, Malaysia.

Dear Sir,

CONTRACT FOR PROJECT TITLE: TO SUPPLY SPECIALIST TO CARRY OUT CONSULTING, INSPECTION, VERIFICATION OF THE DESIGN, CALCULATIONS, MATERIAL, WORKMANSHIP, PRE-COMMISSIONING AND FACTOR ACCEPTANCE TEST (FAT) OF TWO (2) UNIT OF SHIP TO SHORE CRANES (STS) CONSTRUCTION BY ZPMC SHANGHAI PR. CHINA FOR KUANTAN PORT CONSORTIUM SDN. BHD.

REFERENCE: T/KP (CRANE) 44/2020 (LOA) – Dated 20th October 2019.

GLA has been serving as the appointed Specialist, Consultant, and Third-Party Inspection Company for ZPMC Project No. 1002000414. I want to acknowledge and commend GLA Engineers Sdn. Bhd. for the successful culmination of our project at ZPMC Changxing Island in ZPMC Shanghai PR China. The project encompassed Engineering, Construction, Installation, Commissioning, and Testing services over the specified contractual period.

The Management and Technical and engineering Team of Kuantan Port Consortium (KPC) takes pride in collaborating with GLA and appreciates their dedication, professionalism, strong sense of responsibility, wide range of technical capabilities, and hard work.

Throughout this challenging project, which kicked off in October 2019 amidst the COVID-19 pandemic, GLA Engineers demonstrated exceptional commitment, enabling the timely completion of tasks with zero Lost Time Incidents (LTI) and significantly enhancing the project's reputation. Thanks to GLA's substantial contribution, KPC has successfully acquired high-performance cranes for our Kuantan Port Terminal in Pahang Darul Makmur.

On behalf of the entire organization, I extend sincere gratitude to GLA Engineers and convey best wishes for their future endeavors.

Thank you.

SATHIASILAN A/L PUNAMPALAM
Senior Manager
Maintenance Engineering

Cahaya Mata Cement Sdn Bhd,
(Formerly known as CMS Cement Industries Sdn Bhd.),
Lot 766, Block 20, Kidurong Industrial Estate, 97007 Bintulu,
P.O.Box 2012, Bintulu, Sarawak, Malaysia.
Tel : 086-254727 , Fax: 086-254153

Date: 27th January 2025

GLA Engineers Sdn Bhd
No.22A-G, Jalan Musytari AN U5/AN,
Seksyen U5, 40150 Shah Alam, Selangor D.E., Malaysia.
Tel.: +6 037832 9877 Fax.: +6 037832 4577

Dear Mr. Mohd Ashraf Haji Saidon (Operation Manager)

Subject: Appreciation for Completion of Crane Structural Assessment for Bridge Type Grab Ship Unloader 800 T/H at CMS Multipurpose Terminal, Bintulu, Sarawak, Malaysia"

On behalf of CMCSB, I would like to formally convey our appreciation to GLA Engineers Sdn Bhd for the exemplary execution of the Structural Assessment, Inspection, and Auditing related to the Crane Structural Assessment Works for the Bridge Type Grab Ship Unloader 800 T/H at CMS Multipurpose Terminal, Bintulu.

We are highly impressed by the professionalism, technical expertise, and thoroughness demonstrated by your team throughout the project. The development of the crane **Structural Inspection Program (SIP)**, coupled with the execution of the **Crane Inspection and Non-Destructive testing (NDT)**, was performed with meticulous attention to detail. Your team's unwavering commitment to safety, quality, and precision was evident throughout all phases of the project.

We would also like to commend you for the successful and timely submission of the final report, which has provided us with critical data on the structural integrity of the crane. The insights from this report are essential not only for ensuring the continued safe and efficient operation of the equipment at CMS Multipurpose Terminal but also for outlining the recommended next steps that CMCSB should consider for further action.

The work performed was completed to the highest standards of quality, and we look forward to continuing our collaboration with GLA on upcoming projects.

Once again, thank you for your dedication, technical acumen, and the outstanding quality of service provided.

We look forward to further strengthening our professional relationship with GLA Engineers Sdn Bhd.

Sincerely,



Walter Raynard anak Ugun

SME

Cahaya Mata Cement Sdn. Bhd



No. 22A-G, Jalan Musytari AN U5/AN, Seksyen U5,
40150 Shah Alam, Selangor, MALAYSIA.



Tel.: +603 78329877, Fax: +603 78324577



email: enquiry@gla-engineers.com.my



website: www.gla-engineers.com.my



List of Project

Updated: March 2025

Year	Job Description	Location	Client	Field / Type of service	Status
Dec-16	INSPECTION & NDT OF COIL TONG	Klang Selangor, MALAYSIA	Hit-Tech Engineering & Trading Sdn. Bhd.	Inspection & NDT	Completed
Dec-16	FABRICATE AND SUPPLY - PINION GEAR FOR UNLOADER (JIMAH POWER PLANT)	Klang Selangor, MALAYSIA	IHI Transport Engineering Malaysia Sdn. Bhd.	Machining	Delivered
Jan-17	SUPPLY MECHANICAL PART FOR CUL (JIMAH POWER PLAN, UNLOADER CRANE)	Klang Selangor, MALAYSIA	IHI Transport Engineering Malaysia Sdn. Bhd.	Machining	Delivered
Jun-17	SUPPLY NEOPRENE RUBBER	Butterworth Penang, MALAYSIA	GTE Sdn. Bhd.	Part Supply	Delivered
Oct-17	NDT SERVICES FOR TROLLEY RAIL WESTPORT STS CRANE	Klang Selangor, MALAYSIA	Hit-Tech Engineering & Trading Sdn. Bhd.	Inspection & NDT	Completed
Oct-17	MECHANICAL CONSULTATION SERVICES	Jiangyin PR CHINA	Lion Machinery Jiangyin Co., Ltd, China	Consultancy - Machining process	Completed
Apr-18	CONSTRUCTION ENGINEERING SERVICES FOR ONE (1) 65LT STS CONTAINER CRANE AT ZPMC, SHANGHAI CHINA	ZPMC Shanghai, PR CHINA	Altamira Terminal Portuaria, MEXICO	Resident Engineer & Electrical Engineer services	Completed
May-18	TECHNICAL ASSISTANCE CONSULTANCY FOR COMPANY QMS - QUALITY MANAGEMENT SYSTEM START-UP	Shah Alam Selangor, MALAYSIA	Q Ace (M) Sdn. Bhd.	Consultancy - Technical Services	Completed
Jun-18	CONSTRUCTION ENGINEERING SERVICES FOR THREE (3) UNITS OF 41 METRIC TON RUBBER TIRED GANTRY CRANE (RTG) AT ZPMC, SHANGHAI CHINA	ZPMC Nantong, PR CHINA	Altamira Terminal Portuaria, MEXICO	Electrical Engineer & Third-party inspection Services	Completed
Nov-18	SITE INSPECTION SERVICES ON CONTAINER YARD SPREADER	SweFrame Nanhui, PR CHINA	SF Porteq-SWEDEN	Inspection - Third Party Inspection (TPI)	Completed
Nov-18	NDT SERVICES FOR RTG AND RMG CRANE (REPAIR WORK) AT NORTH BUTTERWORTH CONTAINER TERMINAL, PPSB.	Butterworth Penang, MALAYSIA	Q Ace (M) Sdn. Bhd.	Consultancy & Inspection Services	Completed
Jan-19	PRE-DELIVERY INSPECTION & CONSULTANT FOR 1 UNIT GRAB UNLOADER CRANE (PDI)	Wuxi & Zhangjiagang Port, JIANGSU PR CHINA	CMS Cement Industries Sdn. Bhd.	Consultancy & Pre-Delivery Inspection (PDI)	Completed
Jan-19	NDT (MAGNETIC PARTICLE TESTING) SERVICES FOR PORTLAND TIE DOWN LIFTING PLATE	Klang Selangor, MALAYSIA	Hit-Tech Engineering & Trading Sdn. Bhd.	Inspection & NDT - Magnetic Particle Testing	Completed
Jan-19	INSPECTION AND NDT SERVICES FOR TAMAN NEGARA SG. RELAU MERAPOH PAHANG "FABRICATION AND INSTALLATION OF STRUCTURAL BRIDGE".	Shah Alam Selangor, MALAYSIA	Q Ace (M) Sdn. Bhd.	Inspection & NDT - Ultrasonic Testing & Magnetic Particle Testing	Completed
Feb-19	NON-DESTRUCTIVE TESTING AND SITE INSPECTION FOR RUBBER TIRED GANTRY CRANE "RTG" IN NORTH BUTTERWORTH CONTAINER TERMINAL, PENANG PORT - BOOGIE STRUCTURAL CRACK REPAIR WORK.	North Butterworth Container Terminal, PPSB. MALAYSIA	Q Ace (M) Sdn. Bhd.	Inspection & NDT - Ultrasonic Testing & Magnetic Particle Testing	Completed
Mar-19	NDT (MAGNETIC PARTICLE TESTING) AND INSPECTION SERVICES FOR RMG TROLLEY RAIL STRUCTURAL REPAIR.	North Butterworth Container Terminal, PPSB. MALAYSIA	Q Ace (M) Sdn. Bhd.	Inspection & NDT - Magnetic Particle Testing	Completed
Mar-19	DESIGN STAND FOR A-FRAME - PELABUHAN TANJUNG PELEPAS PTP	U5, Subang Impian, MALAYSIA	LFG Sdn. Bhd.	Structure Design - Calculation	Completed
Mar-19	NDT (MAGNETIC PARTICLE TESTING) AND INSPECTION SERVICES FOR RMG HOIST DRUM AND SHAFT WELD CRACK	North Butterworth Container Terminal, PPSB. MALAYSIA	Q Ace (M) Sdn. Bhd.	Inspection & NDT - Magnetic Particle Testing	Completed



List of Project

Updated: March 2025

Year	Job Description	Location	Client	Field / Type of service	Status
Apr-19	DESIGN, FABRICATION, INSTALLATION AND DELIVERY OF 1-UNIT NEW ELECTRICAL ROOM FOR "RTG-CRANE" AT NORTH BUTTERWORTH CONTAINER TERMINAL, PENANG PORT	North Butterworth Container Terminal, PPSB. MALAYSIA	Penang Port Sdn. Bhd.	Fabrication and Installation - M&E works	Completed
Apr-19	TO SUPPLY AND REPLACE "TROLLEY WHEEL" BEARING ON STS #10 AT NORTH BUTTERWORTH CONTAINER TERMINAL, PENANG PORT	North Butterworth Container Terminal, PPSB. MALAYSIA	Penang Port Sdn. Bhd.	Supply and Install - Mechanical works	Completed
May-19	REFURBISHMENT OF 1-UNIT IMPSA SPARE HEADBLOCK AT NORTH BUTTERWORTH CONTAINER TERMINAL CONSIST OF STRUCTURAL INSPECTION AND SITE REMEDIAL WORK, SPREADER BASKET IMPROVEMENT, REPLACEMENT OF MECHANICAL TWISTLOCK ASSEMBLY, ELECTRICAL INSTALLATION, AND NDT.	North Butterworth Container Terminal, PPSB. MALAYSIA	Penang Port Sdn. Bhd.	Refurbishment - Structural, Mechanical & Electrical works	Completed
Jun-19	FABRICATION OF "TROLLEY RAIL GUIDE" ON QUAY CRANE FOR PENANG PORT SDN. BHD.	Sungai Buloh, MALAYSIA.	Penang Port Sdn. Bhd.	Steel Fabrication	Completed
Jun-19	NDT INSPECTION SERVICES "MAGNETIC PARTICLE TESTING". PROVISION OF INSPECTION ON RTG MAPC BOOGIE-EQUALIZER STRUCTURAL CRACK AND MONITORING OF REMEDIAL PROCESS.	North Butterworth Container Terminal, PPSB. MALAYSIA	EG Smart Engineering	Inspection & NDT - Magnetic Particle Testing	Completed
Jul-19	NDT INSPECTION SERVICES "MAGNETIC PARTICLE TESTING". PROVISION OF INSPECTION ON SPREADER TWISTLOCK. 10 PCS OF TWISTLOCK PIN AND GUIDE.	Kuantan Port Consortium. MALAYSIA	R&D Infinite Resources Sdn. Bhd / Kuantan Port Consortium	Inspection & NDT - Magnetic Particle Testing	Completed
Aug-19	MANPOWER AND EXPERTISE TO SAMALAJU PORT - MH01 PIN EXTRACTION JOB & TRADING FOR 2 UNITS OF 100 TON HYDRAULIC JACK.	Samalaju Industrial Port Sdn. Bhd - Bintulu Sarawak. MALAYSIA	Samalaju Industrial Port Sdn. Bhd	Technical Expertise - Mechanical works	Completed
Aug-19	RESIDENT ENGINEER SERVICES FOR FIVE (5) UNITS 65LT STS , NEW JERSEY TERMINAL FANTUZZI CRANE RAISE PROJECT AT ZPMC, SHANGHAI PR. CHINA	ZPMC Changxing Base, Shanghai PR. China.	Maier Terminal LCC - NEW JERSEY TERMINAL, USA	Resident Engineer Services	Completed
Sep-19	MANPOWER AND EXPERTISE TO SAMALAJU PORT - MH01 PIN EXTRACTION JOB.	Samalaju Industrial Port Sdn. Bhd - Bintulu Sarawak. MALAYSIA	Samalaju Industrial Port Sdn. Bhd.	Technical Expertise - Mechanical works	Completed
Sep-19	RTG - RUBBER TIRE GANTRY CRANE MAPC #14, EQUALIZER STRUCTURE REPAIR & PART REPLACEMENT AT NORTH BUTTERWORTH CONTAINER TERMINAL, PENANG.	North Butterworth Container Terminal, PPSB. MALAYSIA	Penang Port Sdn. Bhd.	Structural Repair Work - steel works, NDT and Installation.	Completed
Oct-19	SPECIALIST TO CARRY OUT CONSULTING, INSPECTION, VERIFICATION OF THE DESIGN CALCULATION, MATERIAL, WORKMANSHIP, PRE-COMMISSIONING AND FACTORY ACCEPTANCE TEST (FAT) OF TWO (2) UNITS OF SHIP TO SHORE CRANE FOR KUANTAN PORT CONSORTIUM.	ZPMC Changxing Base, Shanghai PR. China.	Kuantan Port Consortium	Consultancy and Inspection Team (TPI) inclusive Resident Engineer (RE) - Design appraisal, RE & TPI	Completed
Oct-19	TO SUPPLY SANYO DB-3034AF-112 BRAKE PAD FOR MITSUBI RUBBER TIRE GANTRY CRANE AT NORTH BUTTERWORTH CONTAINER TERMINAL, PULAU PINANG.	North Butterworth Container Terminal, PPSB. MALAYSIA.	Penang Port Sdn. Bhd.	Part Supply	Completed
Oct-19	PROVISION FOR NON-DESTRUCTIVE TESTING (NDT) INCLUSIVE OF UT AND MPI FOR FABRICATION STRUCTURE KE43120-3-A1 & KE43120-3-A" AT KAPAR KLANG, SELANGOR.	Kapar Klang, Selangor.	Hit-Tech Engineering & Trading Sdn. Bhd.	Inspection & NDT - Ultrasonic Testing & Magnetic Particle Testing	Completed
Dec-19	CRANE CONDITION INSPECTION OF GRAB SHIP UNLOADER.	Bintulu, MALAYSIA	Cahaya Mata Sarawak Berhad (CMSB)	Consultancy and Inspection - Crane Condition Inspection	Completed
Jan-20	PROVISION FOR NON-DESTRUCTIVE TESTING (NDT) INCLUSIVE OF UT AND MPI FOR RAIL MOUNTED GANTRY CRANE (RMG) HOIST DRUM STRUCTURAL REPAIR WORK.	Shah Alam Selangor, MALAYSIA	Q Ace (M) Sdn. Bhd.	Inspection & NDT - Ultrasonic Testing & Magnetic Particle Testing	Completed
Jan-20	SUPPLY OF GEAR HEAD, SHAFT, GEAR AND BEARING FOR SJB14T-14JEL	U5, Subang Impian, MALAYSIA	Bintulu Port Sdn. Bhd.	Part Supply	Completed



List of Project

Updated: March 2025

Year	Job Description	Location	Client	Field / Type of service	Status
Feb-20	PROVISION FOR NON-DESTRUCTIVE TESTING (NDT) LIQUID DYE PENETRANT TESTING FOR MOCKUP PIPE SPOOL	Shah Alam Selangor, MALAYSIA	Q Ace (M) Sdn. Bhd.	Inspection & NDT - Dye Penetrant Test	Completed
Feb-20	RTG -RUBBER TIRE GANTRY CRANE MAPC #12, EQUALIZER STRUCTURE REPAIR & IMPROVEMENT WORK AT NORTH BUTTERWORTH CONTAINER TERMINAL, PENANG.	North Butterworth Container Terminal, PPSB. MALAYSIA	Penang Port Sdn. Bhd.	Structural Repair Work - steel works, NDT and Installation.	Completed
Feb-20	PROVISION FOR NON-DESTRUCTIVE TESTING (MPI) MAGNETIC PARTICLE TESTING ON REPAIRED STRUCTURAL COMPONENTS RAIL MOUNTED GANTRY CRANE, NBCT	Shah Alam Selangor, MALAYSIA	Q Ace (M) Sdn. Bhd.	Inspection & NDT - Magnetic Particle Testing	Completed
Feb-20	RTG -RUBBER TIRE GANTRY CRANE MAPC #13, EQUALIZER STRUCTURE REPAIR & IMPROVEMENT WORK AT NORTH BUTTERWORTH CONTAINER TERMINAL, PENANG.	North Butterworth Container Terminal, PPSB. MALAYSIA	Penang Port Sdn. Bhd.	Structural Repair Work - steel works, NDT and Installation.	Completed
Feb-20	PROVISION FOR NON-DESTRUCTIVE TESTING (NDT) LIQUID DYE PENETRANT TESTING FOR MOCKUP PIPE SPOOL	Shah Alam Selangor, MALAYSIA	Q Ace (M) Sdn. Bhd.	Inspection & NDT - Dye Penetrant Test	Completed
Mar-20	NON-DESTRUCTIVE TESTING (MAGNETIC PARTICLE TEST) ON RTG #4 AND RTG #5 AT NBCT, PENANG PORT - STRUCTURAL REPAIR WORKS	North Butterworth Container Terminal, PPSB. MALAYSIA	EG Smart Engineering	Inspection & NDT - Magnetic Particle Testing	Completed
Apr-20	NON-DESTRUCTIVE TESTING (MAGNETIC PARTICLE TEST) ON BROMMA SPREADER #18, PENANG PORT - STRUCTURAL REPAIR WORKS	Shah Alam Selangor, MALAYSIA	EG Smart Engineering	Inspection & NDT - Dye Penetrant Test	Completed
Jun-20	RTG -RUBBER TIRE GANTRY CRANE MAPC #12, EQUALIZER BOOGIE PIN SHAFT REPLACEMENT AND IMPROVEMENT WORK AT NORTH BUTTERWORTH CONTAINER TERMINAL, PENANG.	North Butterworth Container Terminal, PPSB. MALAYSIA	Penang Port Sdn. Bhd.	Structural Repair Work - steel works, NDT and Installation.	Completed
Jun-20	TO CARRY OUT MATERIAL CONDITION INSPECTION FOR TUBULAR BRACE - STEEL BRIDGE FOR TAMAN NEGARA SG. RELAU MERAPOH PAHANG.	Shah Alam Selangor, MALAYSIA	Q Ace (M) Sdn. Bhd.	Inspection - Material Condition Inspection	Completed
Jul-20	TO SUPPLY ABB MOTOR SNAG LOAD	Shah Alam Selangor, MALAYSIA	Penang Port Sdn. Bhd.	Part Supply	Completed
Jul-20	FABRICATE AND SUPPLY 8 UNITS ZPMC CATENARY WHEEL TO PENANG PORT SDN BHD COMPLETE WITH HARDENING AS PER DRAWING REQUIREMENT.	Shah Alam Selangor, MALAYSIA	Penang Port Sdn. Bhd.	Part Supply	Completed
Aug-20	NON-DESTRUCTIVE TESTING (MAGNETIC PARTICLE TESTING) FOR PENANG PORT PBT FACTORY STEEL STRUCTURE	Klang Selangor, MALAYSIA	HZE Engineering Services	Inspection & NDT - Magnetic Particle Testing	Completed
Aug-20	NON-DESTRUCTIVE TESTING FOR RAIL MOUNTED GANTRY CRANE - RMG#5 AT NORTH BUTTERWORTH CONTAINER TERMINAL, NBCT - TROLLEY RAIL REPAIR WORK	North Butterworth Container Terminal, NBCT	EG Smart Engineering	Inspection & NDT - Magnetic Particle Testing	Completed
Oct-20	SUPPLY SUPPORT ROLLER UNIT AND NTN NUKR CAM FOLLOWERS - COMPONENT FOR CSU2000T/H IHI TRANSPORT ENGINEERING (M) SDN. BHD - FOR JIMAH EAST POWER PLANT	Klang Selangor, MALAYSIA	IHI Transport Engineering (M) Sdn. Bhd.	Fabrication & Part Supply	Completed
Nov-20	SUPPLY SUPPORT ROLLER UNIT (ADDITIONAL 7 SETS) - COMPONENT FOR CSU 2000T/H FOR IHI TRANSPORT ENGINEERING (M) SDN. BHD - FOR JIMAH EAST POWER PLANT	Klang Selangor, MALAYSIA	IHI Transport Engineering (M) Sdn. Bhd.	Fabrication & Part Supply	Completed
Nov-20	SUPPLY FAG BEARING FOR IHI TRANSPORT ENGINEERING (M) SDN. BHD.	Klang Selangor, MALAYSIA	IHI Transport Engineering (M) Sdn. Bhd.	Part Supply	Completed
Dec-20	SUPPLY AND DELIVER PULSARLUBE M250 SERIES AUTO-LUBRICATOR FOR CSU 2000T/H IHI TRANSPORT ENGINEERING (M) SDN. BHD - FOR JIMAH EAST POWER PLANT	Klang Selangor, MALAYSIA	IHI Transport Engineering (M) Sdn. Bhd.	Part Supply	Completed

No. 22A-G, Jalan Musytari AN U5/AN, Seksyen U5, 40150 Shah Alam, Selangor Darul Ehsan – MALAYSIA.

 Tel.: +603 7832 9877 , Fax: +603 7832 4577 , Email: enquiry@gl-engineers.com.my

List of Project

Updated: March 2025

Year	Job Description	Location	Client	Field / Type of service	Status
Dec-20	NON-DESTRUCTIVE TESTING FOR STS BROMMA SPREADER #15 AT NORTH BUTTERWORTH CONTAINER TERMINAL	North Butterworth Container Terminal, NBCT	EG Smart Engineering	Inspection & NDT - Magnetic Particle Testing	Completed
Jan-21	NON-DESTRUCTIVE TESTING FOR WESTPORT MITSUI SPREADER SP-015 END BEAM CRACK REPAIR PROJECT	Klang Selangor, MALAYSIA	Hit-Tech Engineering & Trading Sdn. Bhd.	Inspection & NDT - Magnetic Particle Testing	Completed
Feb-21	NON-DESTRUCTIVE TESTING FOR PENANG PORT STS SPREADER #16 STRUCTURAL REPAIR WORKS	Klang Selangor, MALAYSIA	EG Smart Engineering	Inspection & NDT - Magnetic Particle Testing	Completed
Mar-21	NON-DESTRUCTIVE TESTING (MAGNETIC PARTICLE TESTING) FOR TOP GLOVE FACTORY STEEL STRUCTURE	Klang Selangor, MALAYSIA	HZE Engineering Services	Inspection & NDT - Magnetic Particle Testing	Completed
April-21	INNOPORT LEVEL LUFFING CRANE #2 - BOOM'S UPPER HINGE BEARING REPLACEMENT, FABRICATION AND SUPPLY	Kuantan Port, MALAYSIA	Innoport Sdn Bhd	Heavy Lifting Work and Installation.	Completed
May-21	INSPECTION AND DAMAGE ASSESSMENT FOR IMPSA QC#1 AT BINTULU PORT SDN. BHD.	Bintulu, MALAYSIA	Bintulu Port Sdn. Bhd	Consultancy and Inspection Team (TPI)	Completed
Jun-21	THIRD PARTY INSPECTION SERVICES FOR REFURBISHMENT OF FIVE (5) UNITS LIEBHERR QUAY CRANE AT RED SEA GATEWAY TERMINAL, JEDDAH KINGDOM OF SAUDI ARABIA.	Red Sea Gateway Terminal, Jeddah, Saudi Arabia	Trent Port Services Pte Ltd	Third-party inspection Services	Completed
Aug-21	RTG 21 & RTG 9 REPAIR 1 UNIT STEERING ARM STRUCTURE	North Butterworth Container Terminal	Penang Port Sdn. Bhd	Repair Work - steel works, NDT and Installation.	Completed
Aug-21	SUPPLY NEW BELLOW FOR CATENARY HYDRAULIC CYLINDER	North Butterworth Container Terminal	EG Smart Engineering	Part Supply	Completed
Sept-21	RMG 03 - TO REPAIR 1 UNIT MAIN HOIST DRUM CRACK AT ENDPLATE	North Butterworth Container Terminal	Penang Port Sdn. Bhd	Repair Work - steel works, NDT and Installation.	Completed
Sept-21	SUPPLY & INSTALL NEW MAIN HOIST BRAKE MAPC RTG 16.	North Butterworth Container Terminal	Penang Port Sdn. Bhd.	Supply and Install - Mechanical works	Completed
Sept-21	RELOCATION OF 2 SHIP TO SHORE CRANES AT RED SEA GATEWAY TERMINAL, JEDDAH - INLAND TRANSPORT OF QC09 AND QC10. BY MAMMOET FZE, DUBAI	Red Sea Gateway Terminal, Jeddah KSA.	Trent Port Services	Third Party Inspection Services	Completed
Nov-21	CONSULTATION ENGAGEMENT DOSH PMA REGISTRATION FOR FOUR (4) UNITS PASSENGER HOISTS	Sapangar Bay Container Port	Sabah Port Sdn. Bhd.	Consultation and Inspection Services	Completed
Jan-22	MAIN CABLE REEL REPLACEMENT	Vale Malaysia Minerals, Lumut Perak	Conductic Whampfler Sdn. Bhd.	Fabrication and Installation - M&E works	Completed
Jan-22	NON-DESTRUCTIVE TESTING FOR VALE LUMUT, SHIP UNLOADER GRAB STRUCTURE	Butterworth, Penang	Global Port Engineering & Services Sdn. Bhd.	NDT - Ultrasonic Testing and Magnetic Particle Testing	Completed
Jan-22	BLASTING AND PAINTING 3 UNITS SHIP-TO-SHORE CRANE' MAHER TERMINALS, NEW JERSEY, USA.	Remote monitoring inspecting (Malaysia)	Maier Terminals, New Jersey, USA	Consultation and Inspection Services	Completed
Jan-22	PROVISION OF BASIC NON-DESTRUCTIVE TESTING (MAGNETIC PARTICLE INSPECTION) ON ONE (1) UNIT OF BOOM FOR TOWER CRANE AT AL-AMBIA YARD KAMPUNG MELAYU SUBANG, SELANGOR	Subang, Malaysia	Al-Ambia Sdn Bhd	NDT (Magnetic Particle Test)	Completed
Mar-22	PRE-DELIVERY INSPECTION OF 1 UNIT SHIP UNLOADER & MOVEABLE CONVEYOR	Kuantan Port, Pahang, Malaysia	MCE S.A. (Mauritanienne de Construction et d'Equipeement)	Consultation and Inspection Services	Completed
Mar-22	ROOT CAUSE ANALYSIS FOR DESIGN FAILURE POST UPGRADING OF 34 UNITS IMPSA RTG AT PELABUHAN TANJUNG PELEPAS.	Port of Tanjung Pelepas (PTP), Malaysia.	ZPMC Malaysia Sdn. Bhd.	Engineering, Consultancy, and Inspection	Completed
Mar-22	TROUBLESHOOTING ACTIVITY ON LEVEL LUFFING CRANE (LL03)	Samalaju Industrial Port / Bintulu Port Sdn Bhd	Samalaju Industrial Port Sdn. Bhd.	Troubleshooting	Completed

No. 22A-G, Jalan Musytari AN U5/AN, Seksyen U5, 40150 Shah Alam, Selangor Darul Ehsan – MALAYSIA.

Tel.: +603 7832 9877 , Fax: +603 7832 4577 , Email: enquiry@gla-engineers.com.my



List of Project

Updated: March 2025

Year	Job Description	Location	Client	Field / Type of service	Status
Mar-22	THIRD PARTY INSPECTION & RESIDENT ENGINEER SERVICES FOR NEW CONSTRUCTION OF 4 UNITS RUBBER TIERED GANTRY CRANE FOR ALTAMIRA TERMINAL PORTUARIA, MEXICO.	ZPMC, Shanghai, PR China	ATP – Altamira Terminal Portuaria	Consultancy and Inspection Team (TPI) inclusive Resident Engineer (RE) & Inspection Team	Completed
Apr-22	SHIP TO SHORE CRANE SURVEY EQUIPMENT RENTAL SERVICES (THEODOLITE INSTRUMENT)	PTP – Pelabuhan Tanjung Pelepas	WCS – World Crane Services FZE	Crane Geometric Surveying Equipment Rental Services	Completed
Apr-22	NDT (ULTRASONIC TESTING) INSPECTION SERVICES FOR REFURBISHMENT OF GRAB ARM STRUCTURE FOR VALE LUMUT	Butterworth, Penang	Global Port Engineering & Services Sdn. Bhd.	NDT – Ultrasonic Testing and Magnetic Particle Testing	Completed
May-22	NDT (MAGNETIC PARTICLE TESTING) INSPECTION SERVICES FOR REPAIRED TROLLEY RAIL CRACK ON RAIL MOUNTED GANTRY CRANE (RMG #05) AT NORTH BUTTERWORTH CONTAINER TERMINAL, PENANG.	Butterworth, Penang	EG Smart Engineering	NDT – Magnetic Particle Testing	Completed
May-22	NDT (ULTRASONIC TESTING) INSPECTION SERVICES FOR REPAIRED TROLLEY RAIL CRACK ON RAIL MOUNTED GANTRY CRANE RMG #05 AT NORTH BUTTERWORTH CONTAINER TERMINAL, PENANG	Butterworth, Penang	Global Port Engineering & Services Sdn. Bhd.	NDT – Ultrasonic Testing	Completed
May-22	SUPPLY GANTREX TROLLEY RAIL CLIP FOR RMG CRANE, PENANG PORT	Butterworth, Penang	Penang Port Sdn. Bhd.	Part Trading	Completed
May-22	SUPPLY QUICK BRAKE INDUCTION MOTOR SJB7T-10JEL (Mfg No. K15122) FOR KUANTAN PORT SDN. BHD – BRAND COSMIC JAPAN.	Kuantan Port, MALAYSIA	Kuantan Port Consortium (KPC)	Part Trading	Completed
June-22	NDT (ULTRASONIC TESTING & MAGNETIC PARTICLE TESTING) ON REPAIRED MITSUI SPREADER FOR WESTPORT AT KLANG SELANGOR	Klang, Selangor	Hit Tech Engineering & Trading Services	NDT – Ultrasonic Testing and Magnetic Particle Testing	Completed
June-22	NDT (ULTRASONIC TESTING & MAGNETIC PARTICLE TESTING) INSPECTION SERVICES FOR RTG #29 LEG CORROSION AND REPLACEMENT OF WEB PLATE AT NORTH BUTTERWORTH CONTAINER TERMINAL, PENANG	Butterworth, Penang	Q Ace (M) Sdn. Bhd.	NDT – Ultrasonic Testing and Magnetic Particle Testing	Completed
June-22	CCI (CRANE CONDITION INSPECTION) OF SLEW SYSTEM, LUFFING SYSTEM AND REVIEWING MAINTENANCE FOR LEVEL LUFFING CRANE AT KUANTAN PORT, MALAYSIA	Kuantan Port, MALAYSIA	Innoport Sdn. Bhd. (Amona Group)	Expertise & Inspection	Completed
June-22	TROUBLESHOOTING ACTIVITY ON LEVEL LUFFING CRANE (LL03)	Bintulu, Sarawak	Samalaju Industrial Port Sdn. Bhd.	Troubleshooting	Completed
June-22	TO SUPPLY SJB7T-10JEL (Mfg No. K15122) QUICK BRAKE INDUCTION MOTOR COSMIC JAPAN	U5, Shah Alam & Kuantan	Kuantan Port Consortium	Part Supply/ Trading	Completed
July-22	SO22-SV20368 ENGINEERING DESIGN AND VERIFICATION FOR PTP 35 UNITS IMPSA RTG GANTRY BUSHING AND PIN REPLACEMENT	Port of Tanjung Pelepas (PTP), Malaysia.	ZPMC Malaysia	Engineering, Consultancy, and Inspection	Completed
July-22	SUPPLY AND DELIVER 1500 PIECES SHIP TO SHORE CRANE "ZPMC TROLLEY RAIL CLIP" FOR PENANG PORT STS CRANE.	Penang Port, North Butterworth Container Terminal.	Penang Port Sdn Bhd	Part Supply/ Trading	Completed
July-22	SUPPLY ENCODER - NORTHSTAR, MODEL NO: RIME 08-600 DISC: ENCODER WHEEL, 600PPR 2.375IN EOS INDEX: Z INDEX SIGNAL	Penang Port, North Butterworth Container Terminal.	Penang Port Sdn Bhd	Part Supply/ Trading	Completed
Aug-22	TO PERFORM NON-DESTRUCTIVE TESTING (MPI) ON RTG#21 (LEG STRUCTURE) AT NORTH BUTTERWORTH CONTAINER TERMINAL	Penang Port, North Butterworth Container Terminal.	EG Smart Engineering	NDT – Magnetic Particle Testing	Completed
Aug-22	THIRD PARTY INSPECTION SERVICES FOR 5 UNIT ZPMC STS CRANE AND 13 UNITS RTGs (MID-LIFE CRANE INSPECTION) AT RED SEA GATEWAY TERMINAL, JEDDAH KINGDOM OF SAUDI ARABIA.	Red Sea Gateway Terminal, Jeddah, Saudi Arabia	Trent Port Services Pte Ltd	Third-party inspection Services	Completed



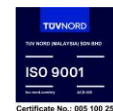
List of Project

Updated: March 2025

Year	Job Description	Location	Client	Field / Type of service	Status
Aug-22	TO PERFORM NON-DESTRUCTIVE TESTING (MPI) ON OVERHEAD CRANE CWP#1, FABRICATED OPERATOR CABIN MAIN FRAME.	HZ Fabrication Workshop, Klang Selangor	HZ Engineering Works	NDT – Magnetic Particle Testing	Completed
Jan-23	NON-DESTRUCTIVE TESTING (UT & MPI) ON QUAY CRANE "QC11" ZPMC - TROLLEY SHORT RAIL REPLACEMENT WORK AT NORTH BUTTERWORTH CONTAINER TERMINAK, PENANG.	North Butterworth Container Terminal, Penang Port Sdn. Bhd.	Q QCE (M) Sdn. Bhd.	NDT – Ultrasonic Testing (UT) & Magnetic Particle Testing (MPI)	Completed
Jan-23	NON-DESTRUCTIVE TESTING (UT & MPI) ON REPAIRED RTG 13 EQUALIZER BOOGIE STRUCTURE AT NORTH BUTTERWORTH CONTAINER TERMINAK, PENANG.	North Butterworth Container Terminal, Penang Port Sdn. Bhd.	Q QCE (M) Sdn. Bhd.	NDT – Ultrasonic Testing (UT) & Magnetic Particle Testing (MPI)	Completed
Jan-23	NON-DESTRUCTIVE TESTING (MPI) ON WESTPORT'S SPREADER SP019 MITSUBISHI – REPAIRING PROJECT	Klang Selangor	Hit Tech Engineering & Trading Sdn. Bhd.	NDT – Magnetic Particle Testing	Completed
Feb-23	STS CRANE PART SUPPLY TMIEC CARD - TMIEC ARND-3110J 13 2N3A3110-C (Brand new) INCLUSIVE OF FIELD ENGINEER SUPPORT DURING INSTALLATION AND COMMISSIONING	HQ, U5 Shah Alam	Penang Port Sdn. Bhd.	Part Supply/ Trading	Completed
Feb-23	NON-DESTRUCTIVE TESTING (UT & MPI) ON QUAY CRANE "QC15" TROLLEY SHORT RAIL REPLACEMENT WORK AT NORTH BUTTERWORTH CONTAINER TERMINAK, PENANG.	North Butterworth Container Terminal, Penang Port Sdn. Bhd.	Q QCE (M) Sdn. Bhd.	NDT – Ultrasonic Testing (UT) & Magnetic Particle Testing (MPI)	Completed
Feb-23	NON-DESTRUCTIVE TESTING (UT & MPI) ON REPAIRED MAIN HOIST DRUM OF RAIL MOUNTED GANTRY CRANE (RMG05, RMG03) AT NORTH BUTTERWORTH CONTAINER TERMINAL, PENANG.	North Butterworth Container Terminal, Penang Port Sdn. Bhd.	Q QCE (M) Sdn. Bhd.	NDT – Ultrasonic Testing (UT) & Magnetic Particle Testing (MPI)	Completed
Feb-23	PROVISION TO SUPPORT ENGINEERING AT SAPANGGAR BAY CONTAINER FOR THE TROUBLESHOOTING WORKS ON GROUNDING SYSTEM AND CABLE REEL SYSTEM ON LEVEL LUFFING CRANE LLC03	Sapanggar Bay Container, Terminal	SBCT – Bintulu Port	Troubleshooting	Completed
Mar-23	COSMIC MOTOR JACK SCREW ASSEMBLY (MFG: K1890302)	HQ, U5 Shah Alam	Penang Port Sdn. Bhd.	Part Supply/ Trading	Completed
Mar-23	QC13 - TO REINSTATE HUBNER UNIT ONE UNIVERSAL ENCODER SYSTEM OF MAIN HOIST DRIVE ZPMC QUAY CRANE AT PENANG PORT SDN.BHD.	North Butterworth Container Terminal, Penang Port	Penang Port Sdn. Bhd.	Servicing/ Breakdown and Technical Support	Completed
Apr-23	RTG13 (MAPC)- EQUALIZER BOOGIE PIN REPLACEMENT AND STRUCTURE CRACK REPAIR	North Butterworth Container Terminal, Penang Port	Penang Port Sdn. Bhd.	Field rectification, improvement, and NDT	Completed
May-23	QC6 (ZPMC) - TO INSTALL GANTRY TRAVEL SLOWDOWN AND STOP LIMIT SWITCHES FOR 6.6KV HIGH TENSION CABLE,	North Butterworth Container Terminal, Penang Port	Penang Port Sdn. Bhd.	Electrical Component Installation & Commissioning Work	Completed
May-23	RTG 22 (KALMAR) – FABRICATION OF NEW STREEING ARM	North Butterworth Container Terminal, Penang Port	Penang Port Sdn. Bhd.	New fabrication work/ Supply	Completed
June-23	NON-DESTRUCTIVE TESTING (UT & MPI) ON RTG STRUCTURE LEG REPAIR WORKS AT NORTH BUTTERWORTH CONTAINER TERMINAK, PENANG.	North Butterworth Container Terminal, Penang Port Sdn. Bhd.	Q QCE (M) Sdn. Bhd.	NDT – Ultrasonic Testing (UT) & Magnetic Particle Testing (MPI)	Completed
June-23	RAIL MOUNTED GANTRY CRANE (RMG-02), GIRDER TOP FLANGE SURFACE CORROSION REPAIR AND REPLACEMENT OF NEW TROLLEY RAIL.	North Butterworth Container Terminal, Penang Port Sdn. Bhd.	Penang Port Sdn. Bhd.	Structure corrosion repair, surface preparation, re-coating, and rail replacement.	Completed
June-23	SUPPLY 2 UNITS BREVIVI GEARBOX FOR RAIL MOUNTED GANTRY CRANE (RMG)	North Butterworth Container Terminal, Penang Port Sdn. Bhd.	Penang Port Sdn. Bhd.	Trading/ Part Supply	Completed



GLA ENGINEERS SDN. BHD.



Certificate No.: 095 100 25002

List of Project

Updated: March 2025

Year	Job Description	Location	Client	Field / Type of service	Status
July-23	SUPPLY GRUNDFOS VERTICAL PUMP CR15-3 A-F-A-E HQQE	Shah Alam, Selangor.	Imakma Engineering	Part Supply	Completed
July-23	QC9 – TO REPLACE AND INSTALL NEW GANTRY TRAVEL SLOWDOWN AND STOP LIMIT SWITCHES FOR 6.6KV HIGH TENSION CABLE AT NORTH BUTTERWORTH CONTAINER TERMINAL	North Butterworth Container Terminal, Penang Port Sdn. Bhd.	Penang Port Sdn. Bhd. (PPSB)	Installation, Commissioning and Testing	Completed
July-23	SUPPLY TMIEC GATE CONTROL BOARD TMDRIVE 10 GDM ARND-3115 A 18 FOR PENANG PORT QUAY CRANE	North Butterworth Container Terminal, Penang Port Sdn. Bhd.	Penang Port Sdn. Bhd. (PPSB)	Part Supply/ Trading	Completed
Aug-23	SUPPLY BREVINI GEARBOX EC2091 FOR RAIL MOUNTED GANTRY CRANE (RMG) AT PENANG PORT	North Butterworth Container Terminal, Penang Port Sdn. Bhd.	Penang Port Sdn. Bhd. (PPSB)	Part Supply/ Trading	Completed
Sept-23	REFURBISHMENT OF OPERATOR CABIN CHAIR AT KAPAR ENERGY VENTURE, KAPAR POWER PLANT, SELANGOR	Klang, Selangor	IHI Transport Engineering (M)	Repair/ Refurbishment	Completed
Sept-23	DESIGN, FABRICATE, SUPPLY AND INSTALLATION OF NEW 9METERS GANGWAY WITH CANOPY AT SWETTENHAM PIER CRUISE TERMINAL, PENANG.	Jiangyin China & Penang Malaysia.	Penang Port Sdn. Bhd. (PPSB).	Design, Fabrication & Installation	Complete
Sept-23	PROVISION FOR NON-DESTRUCTIVE TESTING (UT & MPI) ON RMG4, RMG7 AND QC13 AT NORTH BUTTERWORTH CONTAINER TERMINAL, PENANG.	Butterworth, Penang Port	Q ACE (M) Sdn. Bhd.	NDT Services	Completed
Sept-23	PROVISION FOR NON-DESTRUCTIVE TESTING (UT) ON NEW SHORT RAIL REPLACEMENT QC10 ZPMC AT NORTH BUTTERWORTH CONTAINER TERMINAL, PENANG.	Butterworth, Penang Port	Global Port Engineering Services Sdn. Bhd.	NDT Services	Completed
Sept-23	FABRICATE AND SUPPLY 2 UNITS PINION GEAR PCD 369 FOR JIMAH POWER PLANT	Klang & Jimah Power Plant, Negeri Sembilan.	IHI Transport Engineering (M)	Fabrication and Supply	Completed
Sept-23	PROVISION FOR NON-DESTRUCTIVE TESTING (MPI) ON REPAIRED RTG BOOGIE STRUCTURE AT NORTH BUTTERWORTH CONTAINER TERMINAL, PENANG.	NBCT, Penang Port	Q ACE (M) Sdn. Bhd.	NDT Services	Completed
Sept-23	NON-DESTRUCTIVE TEST (MPI) ON RMG3 CHIN PAN, MAIN HOIST DRUM CRACK AND REPAIR WORKS.	NBCT, Penang Port	Penang Port Sdn. Bhd.	NDT Services	Completed
Sept-23	NON-DESTRUCTIVE TEST (MPI) ON RMG2 ADDITIONAL STRUCTURE REINFORCEMENT ON THE TIE EBEAM AND MAIN TROLLEY.	NBCT, Penang Port	Q Ace (M) Sdn. Bhd.	NDT Services	Completed
Sept-23	QC15 - UPGRADING CRANE MONITORING SYSTEM (CMS) TO NEWER PROCESSORS FOR IMPROVED THE PERFORMANCE.	NBCT, Penang Port	Penang Port Sdn. Bhd. (PPSB)	Crane CMS Upgrading	Completed
Oct-23	IMPESA STS CRANE – SUPPLY NEW 4 UNITS OF CATENARY WHEEL AND SHAFT INCLUDING SKF BEARING AND OIL SEAL	Klang, Selangor	Penang Port Sdn. Bhd. (PPSB)	Part Supply/ Trading	Completed
Nov-23	NON-DESTRUCTIVE TESTING FOR RTG13 PENANG PORT, BOOGIE STRUCTURE REPAIR WORKS. ULTRASONIC TESTING AND MAGNETIC PARTICLE TESTING.	Rawang, Selangor	Q QACE (M) Sdn. Bhd	NDT Services	Completed
Jan-24	SUPPLY ANALOG OUTPUT IC200ALG325J FOR PENANG PORT SDN. BHD.	North Butterworth Container Terminal	Penang Port Sdn. Bhd. (PPSB)	Part Supply/ Trading	Completed
Jan-24	NON-DESTRUCTIVE TESTING ON PPSB RTG #27 (SAMSUNG) STRUCTURE LEG REPAIR WORKS AT NORTH BUTTERWORTH CONTAINER TERMINAL, PENANG PORT	North Butterworth Container Terminal	Q QACE (M) Sdn. Bhd	NDT Services	Completed

No. 22A-G, Jalan Musytari AN U5/AN, Seksyen U5, 40150 Shah Alam, Selangor Darul Ehsan – MALAYSIA.

Tel.: +603 7832 9877 , Fax: +603 7832 4577 , Email: enquiry@gla-engineers.com.my



GLA ENGINEERS SDN. BHD.



Certificate No.: 095 100 25002

List of Project

Updated: March 2025

Year	Job Description	Location	Client	Field / Type of service	Status
Jan-24	TO PERFORM EQUIPMENT CONDITION INSPECTION, CONSIST OF STRUCTURE AND MECHANICAL ON 2 UNITS IHI'S CONTINUOUS SHIP UNLOADER AT JIMAH EAST POWER PLANT	Jimah East Power Plant, Stensen Janakuasa Tuanku Mukhriz, Negeri Sembilan	IHI Transport Engineering (M)	Inspection Services	Completed
Jan-24	FABRICATE AND SUPPLY 4 UNITS PINION GEAR PCD 369 FOR JIMAH POWER PLANT, STESEN JANAKUASA TUANKU MUKHRIZ, NEGERI SEMBILAN.	Klang & Jimah Power Plant, Negeri Sembilan.	IHI Transport Engineering (M)	Fabrication and Supply	Completed
Jan-24	PRE-DELIVERY INSPECTION OF 3 UNITS SHIP TO SHORE CRANE AT MANILLA, PHILIPPINES.	Manila International Container Terminal, Manila, Philippines	Global Port Engineering Services	Inspection Services	Completed
Feb-24	RELOCATION OF 3 UNITS SHIP TO SHORE (STS) AT MICT, MANILA PHILIPPINES CRANE LOADING INTO VESSEL ZHE SHAN	Manila International Container Terminal, Manila, Philippines	Global Port Engineering Services	Technical Advice / Loading STS	Completed
Mar-24	SUPPLY BREVINI GEARBOX EC3090 FOR RAIL MOUNTED GANTRY CRANE (RMG) AT PENANG PORT	North Butterworth Container Terminal, Penang Port Sdn. Bhd.	Penang Port Sdn. Bhd. (PPSB)	Part Supply/ Trading	Completed
Mar-24	SUPPLY LED LIGHT FOR WALKWAY AT PENANG PORT	North Butterworth Container Terminal, Penang Port Sdn. Bhd.	Penang Port Sdn. Bhd. (PPSB)	Part Supply/ Trading	Completed
Mar-24	STS CRANE PART SUPPLY TMIEC CARD - TMEIC ARND-3119 (Brand new)	HQ, U5 Shah Alam	Penang Port Sdn. Bhd. (PPSB)	Part Supply/ Trading	Completed
Mar-24	SUPPLY SOLAR LED LIGHT FOR NTE JOHOR	NTE Johor	NTE	Part Supply /Trading	Completed
Mar-24	SUPPLY VIDEO CODEC MODULE MODEL: AVSC04S AT PENANG PORT	North Butterworth Container Terminal, Penang Port Sdn. Bhd.	Penang Port Sdn. Bhd. (PPSB)	Part Supply/ Trading	Completed
Apr-24	TO SUPPLY NEW BREVINI GEARBOX FOR RAIL MOUNTED GANTRY CRANE AT PENANG PORT	North Butterworth Container Terminal, Penang Port Sdn. Bhd.	Penang Port Sdn. Bhd. (PPSB)	Part Supply/ Trading	Completed
Apr-24	TO SUPPLY NEW NIDEC MOTOR FOR QUAY CRANE IMPSA AT KUANTAN PORT.	Kuantan Port Consortium	IJM, Kuantan Port	Part Supply/ Trading	Completed
Mar-24	RTG 21 (KALMAR) - FABRICATION OF NEW STREEING ARM	North Butterworth Container Terminal, Penang Port	Penang Port Sdn. Bhd. (PPSB)	New fabrication work/ Supply	Completed
May-24	PROVISION OF NON-DESTRUCTIVE TESTING (MAGNETIC PARTICLE INSPECTION) ON 2 UNITS EMBARKATION TOWER AT SG BAKAU, RAWANG	Rawang Selangor	Q ACE (M) Sdn. Bhd.	NDT/ Inspection	Completed
May-24	PROVISION OF NON-DESTRUCTIVE TESTING (ULTRASONIC TESTING) ON QUAY CRANE #13 TROLLEY RAIL AT NORTH BUTTERWORTH CONTAINER TERMINAL, PENANG.	North Butterworth Container Terminal, Penang Port Sdn. Bhd.	Q ACE (M) Sdn. Bhd.	NDT/ Inspection	Completed
May-24	TO SUPPLY HYBRICON POWER SUPPLY UNIT FOR QUAY CRANE AT PENANG PORT.	North Butterworth Container Terminal, Penang Port	Penang Port Sdn. Bhd. (PPSB)	Part Trading	Completed
May-24	TO SUPPLY COSMIC MOTOR CYLINDER DGM4T-8JL FOR PENANG PORT SDN BHD	North Butterworth Container Terminal, Penang Port	Penang Port Sdn. Bhd. (PPSB)	Part Trading	Completed
May-24	UPGRADING CRANE MONITORING SYSTEM (CMS) TO NEWER PROCESSOR FOR IMPROVE THE PERFORMANCE ON IMPSA QC6 AT PENANG PORT.	North Butterworth Container Terminal, Penang Port	Penang Port Sdn. Bhd. (PPSB)	Part Trading	Completed

No. 22A-G, Jalan Musytari AN U5/AN, Seksyen U5, 40150 Shah Alam, Selangor Darul Ehsan – MALAYSIA.

Tel.: +603 7832 9877 , Fax: +603 7832 4577 , Email: enquiry@gla-engineers.com.my

List of Project

Updated: March 2025

Year	Job Description	Location	Client	Field / Type of service	Status
June-24	TO SUPPLY VARIOUS COUPLING FOR HOIST DRUM TO CAM SWITCH AND MOTOR ENCODER "JAKOB GERMANY" FOR RAIL MOUNTED GANTRY CRANE (RMG) PENANG PORT	North Butterworth Container Terminal, Penang Port	Penang Port Sdn. Bhd. (PPSB)	Part Trading	Completed
June-24	QUAY CRANE STRUCTURAL INSPECTION (IN-SERVICE) ON 6 UNITS OF SHIP TO SHORE CRANE (QCS) AT MANILLA, PHILIPPINES.	Manila North Harbour Port Inc	Puerto Primera Incorporated	Third Party Inspection Services	Completed
June-24	UPGRADING CRANE MONITORING SYSTEM (CMS) TO NEWER PROCESSOR FOR IMPROVE THE PERFORMANCE ON ZPMC QC11 AT PENANG PORT.	North Butterworth Container Terminal, Penang Port	Penang Port Sdn. Bhd. (PPSB)	Part Trading	Completed
July-24	STRUCTURAL INSPECTION AND AUDIT ON 1 UNIT OF BRIDGE TYPE GRAB SHIP UNLOADER 800T/H AT CMS - CAHYA MATA SARAWAK CEMENT PLANT, BINTULU.	Bintulu, Sarawak	Cahya Mata Sarawak (CMS)	Third Party Inspection Services	Completed
July-24	PROVISION FOR THE NON-DESTRUCTIVE TESTING ON RTG 13 - PORTAL LINKAGES CRACKED AT NORTH BUTTERWORTH CONTAINER TERMINAL, NBCT	North Butterworth Container Terminal	EG Smart Engineering	Third Party Inspection Services/ NDT	Completed
July-24	THIRD-PARTY INSPECTION, VERIFICATION OF DESIGN, MATERIAL, WORKMANSHIP, TESTING AND COMMISSIONING OF TWO (2) UNITS NEW SHIP TO SHORE CRANE FOR JOHOR PORT BERHAD.	ZPMC Shanghai	Johor Port Berhad (MMC Group)	Consultancy and Inspection Team (TPI) Design appraisal & TPI	On-Going
Aug-24	FABRICATE, SUPPLY AND INSTALL NEW 3 PHASE STEPDOWN TRANSFORMER FOR RUBBER TYRE GANTRY CRANE (KALMAR) AT NBCT	North Butterworth Container Terminal	Penang Port Sdn. Bhd. (PPSB)	Supply & Installation	Completed
Aug-24	SUPPLY TMIEC MAIN HOIST DRIVE FIRING BOARD ARND3119 FOR ZPMC SHIP TO SHORE CRANE (STS) AT NBCT	North Butterworth Container Terminal	Penang Port Sdn. Bhd. (PPSB)	Part Trading	Completed
Aug-24	SUPPLY NEW EVERLIN GEARBOX (ANTI-SWAY) FOR RAIL MOUNTED GANTRY CRANE (RMG) FOR PENANG PORT	North Butterworth Container Terminal	Penang Port Sdn. Bhd. (PPSB)	Part Trading	Completed
Aug-24	SUPPLY NEW EMBEDDED POWER CONTROL (MODULE EPCPCRA)	North Butterworth Container Terminal	Global Port Services (GPES)	Part Trading	Completed
Sept-24	CONSULTANCY INSPECTION SERVICES/ TPI (OWNER REPRESENTATIVE) FOR 47 UNITS OF ZPMC SHIP TO SHORE CRANE AT PORT OF TANJUNG PELEPAS (PTP).	Tanjung Pelepas, Johor	Port of Tanjung Pelepas (PTP)	Consultancy for TPI/ Owner Representative	On-Going
Sept-24	PROVISION OF NON-DESTRUCTIVE TESTING (MAGNETIC PARTICLE TESTING) ON RTG CRANE #25 STRUCTURAL LEG REPAIR WORKS AT NORTH BUTTERWORTH CONTAINER TERMINAL, PENANG.	North Butterworth Container Terminal, Penang Port Sdn. Bhd.	Q ACE (M) Sdn. Bhd.	NDT/ Inspection	Completed
Sept-24	SUPPLY TMIEC MAIN HOIST DRIVE FIRING BOARD ARND3119-A FOR ZPMC SHIP TO SHORE CRANE (STS) AT NBCT	North Butterworth Container Terminal	Penang Port Sdn. Bhd. (PPSB)	Part Trading	Completed
Sept-24	PROVISION OF NON-DESTRUCTIVE TESTING (ULTRASONIC TESTING & MAGNETIC PARTICLE TESTING) FOR HESS NEW STRUCTURE SUPPORT FOR PRODUCED WATER SKID	Banting, Selangor	Q ACE (M) Sdn. Bhd.	NDT/ Inspection	Completed
Oct-24	PROCUREMENT OF NEW COSMIC SCREW JACK FOR TRIM LIST SKEW (TLS) FOR ZPMC QUAY CRANE AT KUANTAN PORT	Japan & Kuantan Malaysia	Kuantan Port Consortium	Part Trading	On-Going
Nov-24	RUBBER TYRE GANTRY CRANE (RTG) MAPC #11 &12 UPGRADING SIEMEN SYSTEM FROM S5 TO S7	North Butterworth Container Terminal	Penang Port Sdn. Bhd. (PPSB)	Part Trading	Completed
Dec-24	CONSULTATION AND LIASON ENGINEERING WORK FOR 4 UNIT PASSENGER HOIST (ELEVATOR) QUAY CRANE AND COMPLETE WITH DOSH MALAYSIA RENEWAL CERTIFICATE AT SAPANGGAR BAY CONTAINER TERMINAL	Sapanggar Bay Container Terminal (Sabah Port)	Sabah Port Sdn Bhd & Sabah DP World	DOSH PMA Renewal Elevator	Completed



GLA ENGINEERS SDN. BHD.



Certificate No.: 095 100 25002

List of Project

Updated: March 2025

Year	Job Description	Location	Client	Field / Type of service	Status
Jan-25	CONSULTANCY INSPECTION SERVICES TPI (OWNER REPRESENTATIVE) FOR ZPMC SHIP TO SHORE CRANE (QC39) STRUCTURAL CRACK REPAIR (QC40) AT PORT OF TANJUNG PELEPAS (PTP).	Tanjung Pelepas, Johor	Port of Tanjung Pelepas (PTP)	Consultancy for TPI/ Owner Representative	Completed
Jan-25	FABRICATE AND SUPPLY 3 UNITS PINION GEAR PCD 369 FOR JIMAH POWER PLANT	Klang & Jimah Power Plant, Negeri Sembilan.	IHI Transport Engineering (M)	Fabrication and Supply	Completed
Jan-25	PROVISION OF NON-DESTRUCTIVE TESTING (MAGNETIC PARTICLE INSPECTION & ULTRASONIC TESTING INSPECTION) ON BROMMA SPREADER STRUCTURAL REPAIR WORKS AT NBCT, PENANG PORT	Rawang Selangor	Q ACE (M) Sdn. Bhd.	NDT/ Inspection	Completed
Feb-25	BULLDOZER LIFTING DEVICE WIRE ROPE WITH RESIN 500CC DESTRUCTIVE TESTING (PULL TEST)	Klang & Jimah Power Plant, Negeri Sembilan.	IHI Transport Engineering (M)	Destructive Testing	Completed
Feb-25	PROVISION OF NON-DESTRUCTIVE TESTING (MAGNETIC PARTICLE TESTING) FOR PEDESTRIAN BRIDGE COLUMN AND SUPPORT STRUCTURE FOR TNB	Banting, Selangor	Q ACE (M) Sdn. Bhd.	NDT/ Inspection	Completed
Feb-25	PROVISION OF NON-DESTRUCTIVE TESTING (MAGNETIC PARTICLE INSPECTION PERFORMED ON 2 LOCATIONS ON RTG14: 1. CENTER LEG, C-SIDE PATCHING PLATE (LEG 1), 2 POINTS AT NORTH BUTTERWORTH CONTAINER TERMINAL, PENANG,	Banting, Selangor	Q ACE (M) Sdn. Bhd.	NDT/ Inspection	Completed
Feb-25	FABRICATE, SUPPLY AND DELIVER 2 SETS OF BULLDOZERS LIFTING DEVICE FOR 2 UNIT OF CONTINUOUS SHIP UNLOADER FOR JIMAH EAST POWER PLANT (STESEN ANAKUASA TUANKU MUKHRIZ), PORT DICKSON, NEGERI SEMBILAN MALAYSIA.,	Klang & Jimah Power Plant, Negeri Sembilan.	IHI Transport Engineering (M)	Fabricate, supply and deliver complete with NDT.	On-Going
Mar-25	RTG15-SUPPLY & INSTALL CARDAN SHAFT (UNIVERSAL JOINT) FOR MAIN HOIST.	North Butterworth Container Terminal	Penang Port Sdn. Bhd. (PPSB)	Part Supply complete with Installation and Testing (Mechanical)	On-Going

No. 22A-G, Jalan Musytari AN U5/AN, Seksyen U5, 40150 Shah Alam, Selangor Darul Ehsan – MALAYSIA.

Tel.: +603 7832 9877 , Fax: +603 7832 4577 , Email: enquiry@gla-engineers.com.my